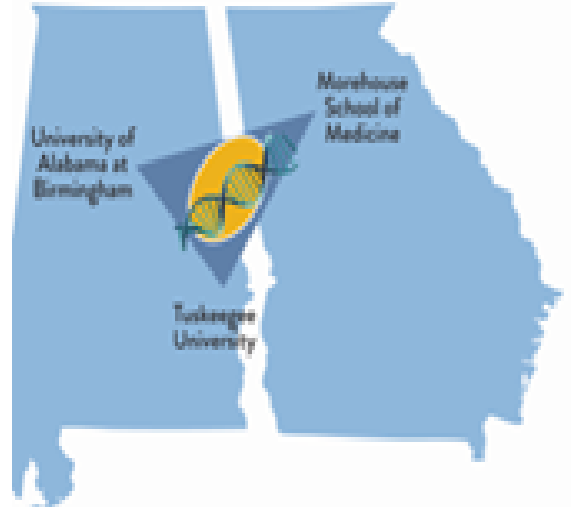


Morehouse School of Medicine/Tuskegee University/ UAB O'Neal Comprehensive Cancer Center Partnership (PACHE)



Building Research Competitiveness PACHE Program Meeting, 2021

Upender Manne, MS, PhD
Professor of Pathology, Surgery, Epidemiology
Director, Translational Anatomic Pathology
University of Alabama at Birmingham

MSM/TU/ UAB CCC Partnership Leadership



Morehouse School of Medicine

Brian Rivers, PhD, MPH
James Lillard, PhD, MBA



Tuskegee University

Clayton Yates, PhD
Vivian Carter, PhD
Windy Dean-Colomb, MD

UAB O'Neal Comprehensive Cancer Center

Upender Manne, MS, PhD
Isabel Scarinci, PhD, MPH



Challenges - Research Competitiveness

- ❖ Establishing and maintaining competitive research portfolio
- ❖ Maintaining research collaborations/partnerships
- ❖ Addressing cancer disparities in the catchment area
- ❖ Integrating research projects with communities
- ❖ Translating matured projects evolved through partnerships



Establishing and maintaining competitive research portfolio

- SWOT analysis (conduct regardless of your existence of the partnership)
- Create a framework (mission/goals/themes/objectives)
- Identify major areas of research relevant to cancer disparity in catchment areas of partnering institutions
- Incorporate novel ideas/emerging technologies and persist with your unique strengths (e.g. Bioethics)
- Identify high quality/meritorious projects



Establishing and maintaining competitive research portfolio

5

- Process of solicitation, review, selection of research projects (e.g. external reviewers)
- Providing resources needed for the projects (e.g. scientific editor, tissues, linking with clinicians)
- Evaluating progress/transitioning of research projects (e.g. critical quality/progress assessments by IAC, PSC)
- Helping applicants (reviewing proposals prior to submission, grant writing-workshops, mock review sessions, encourage team science)
- Develop and persist with meritorious projects (pre-pilots or pilots for yrs. 4 and 5)



Establishing and Maintaining Research Competitiveness

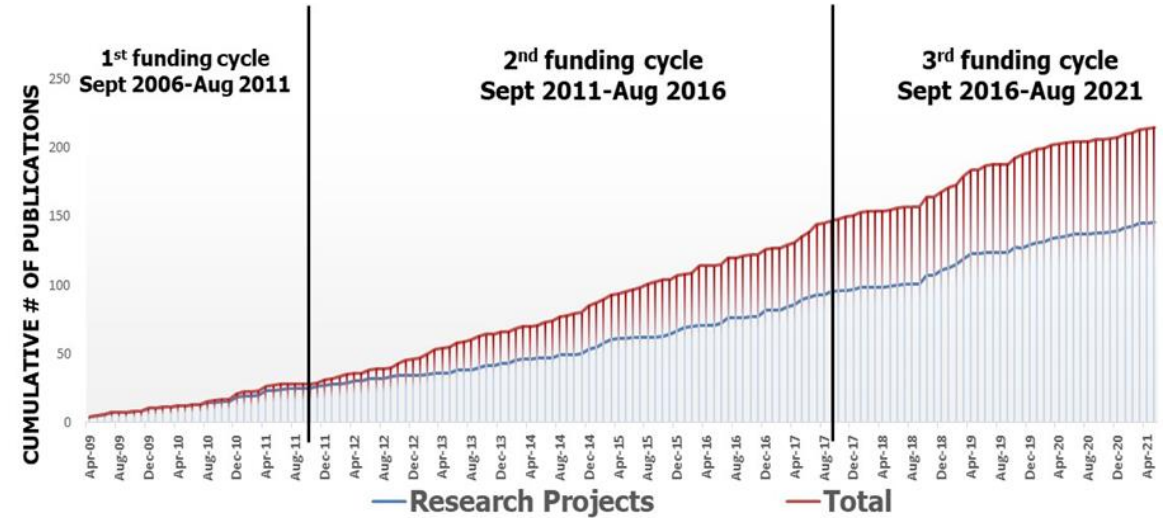
- ❖ Historically Partnership Engaged in -
 - Basic and Translational Research Projects
 - Basic – Laboratory-Based Projects (Majority)
 - Pre-Clinical Translational Projects
 - Community-Based Research Projects (investigator-driven, interventional/non-interventional)



Outcomes of competitive research

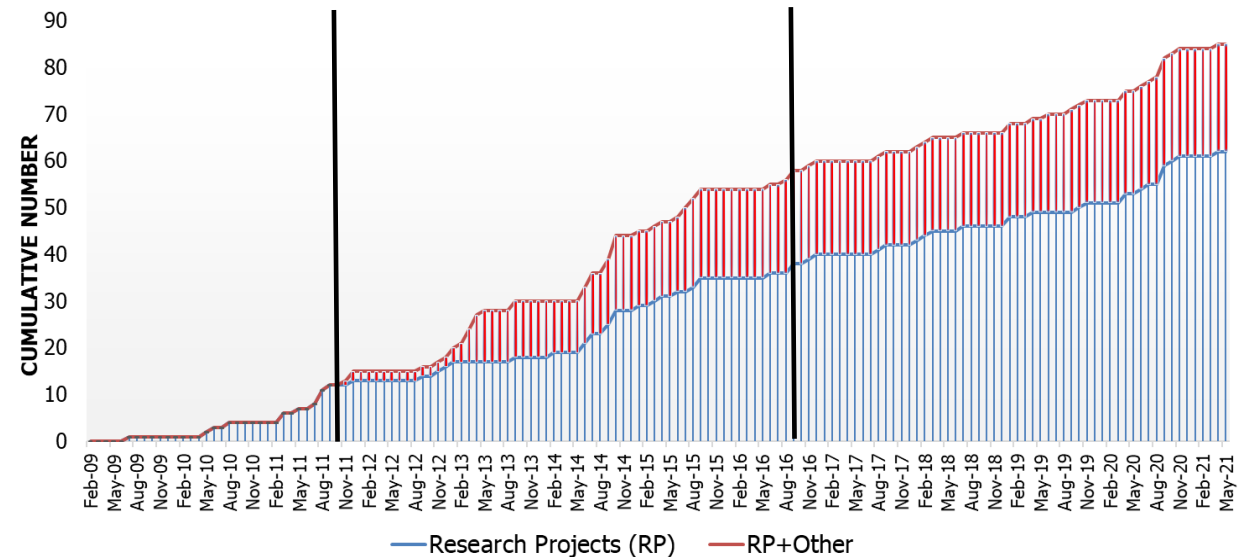
Peer-Reviewed Publications

- ❖ **222** total peer-reviewed pubs **specific** to the U54 Aims.
- ❖ **57** during this funding cycle
- ❖ **16** during this PSC
- ❖ Additional **186** publications credited to Partnership grant
- ❖ Total publications – **398+**



GRANTS:

- ❖ **89** grant proposals funded to the U54 investigators
- ❖ **28** during this funding cycle/**9** during this PSC
- ❖ 61 in previous cycles
- ❖ Overall **10 R01s** (4 MSM, 6 UAB), **9 R21s** (1 MSM, 2 TU, 6 UAB), **4 SC1s** (2 MSM, 2 TU), **8 DoDs** (2 to MSM, 2 TU and 4 to UAB), **58 others** (20 MSM, 19 TU, 19 UAB)



Outcomes of competitive research

Category	U54 Publications				U54 Funded grants			
	MSM	TU	UAB	Total	MSM	TU	UAB	Total
Research Projects								
1st Funding period	24	14	23	61	8	5	12	25
2nd Funding period	28	24	6	58	9	9	4	22
3rd Funding period	3	10	11	24	3	5	7	15
Total	55	48	40	143	20	19	24	62
Outreach								
1st Funding period	1	0	2	3	1	0	0	1
2nd Funding period	14	2	4	20	4	0	3	7
3rd Funding period	8	1	0	9	0	2	0	2
Total	23	3	6	32	5	2	3	10
BBSR/BESR								
1st Funding period	0/0	0/1	0/1	0/2	0/0	0/1	0/0	1
2nd Funding period	2/4	6/6	4/2	12/12	0/0	4/1	0/0	5
3rd Funding period	4/1	0/13	0/3	4/17	1/0	4/0	0/0	5
Total	11	26	10	47	1	10	0	11
Other (3rd F. period)	0	0	0	0	2	2	2	6
Total/institution	89	77	56	-	27	34	29	-
Grand total	-	-	-	222	-	-	-	89

Publications and Funded Grants According to the Partnering Institution of the Primary/Senior Author (U54 Project Co-leader)

September 2007 - August 2021 (except Research Education Core)



Integrating with communities - competitive research portfolio

- ❖ Engaging communities to aid in developing innovative projects and in accelerating translation of findings to address cancer disparity
 - Educational programs – e.g. *cancer info cafés* (outreach leaders and scholars) to share research findings.
 - Bi-directional discussions may lead to community-driven projects (e.g. cancer genomics education program by clinical community navigators-outreach program)
 - Seminars/events to bring awareness of cancer screening (e.g. S2S)

Translating matured basic research projects - competitive research

- Multidisciplinary team science (e.g. CCC/CCTS) (SPORE)
- Lack of race/ethnicity-specific biological resources
 - E.g. *Development of cell lines, organoids, patient-derived xenografts (Reissued R01 [PAR-21-322](#))*
- Exploratory/Developmental Grants – R21 [-PAR-21-323](#)
- Small Research Grants – R03 - [PAR-21-324](#)
- Low recruitment of minority patients for tumor tissue donation (e.g. Cancer Care Connect, IMPACT, Cancer Genomics Education Program)
- Connecting minority patients to clinical trials (CUSP2CT- U01-[RFA-CA-21-057](#)) (SPORE-with overarching theme of cancer health disparities)



CONCLUSIONS – BUILDING COMPETITIVE RESEARCH

- Multidisciplinary team science/team-effort
- Implementing suggestions from internal discussions, evaluations, lessons learned, and recommendations from IAC/PSC aided in addressing the challenges
- The salience of various challenges and facilitating factors will vary at different partnering institutions and phases of the research processes (needs micro level adjustments)
- Continued trust and knowledge developed within the team/partnership and stable leadership will contribute to partnership/network success



THANKS

QUESTIONS/DISCUSSION

