



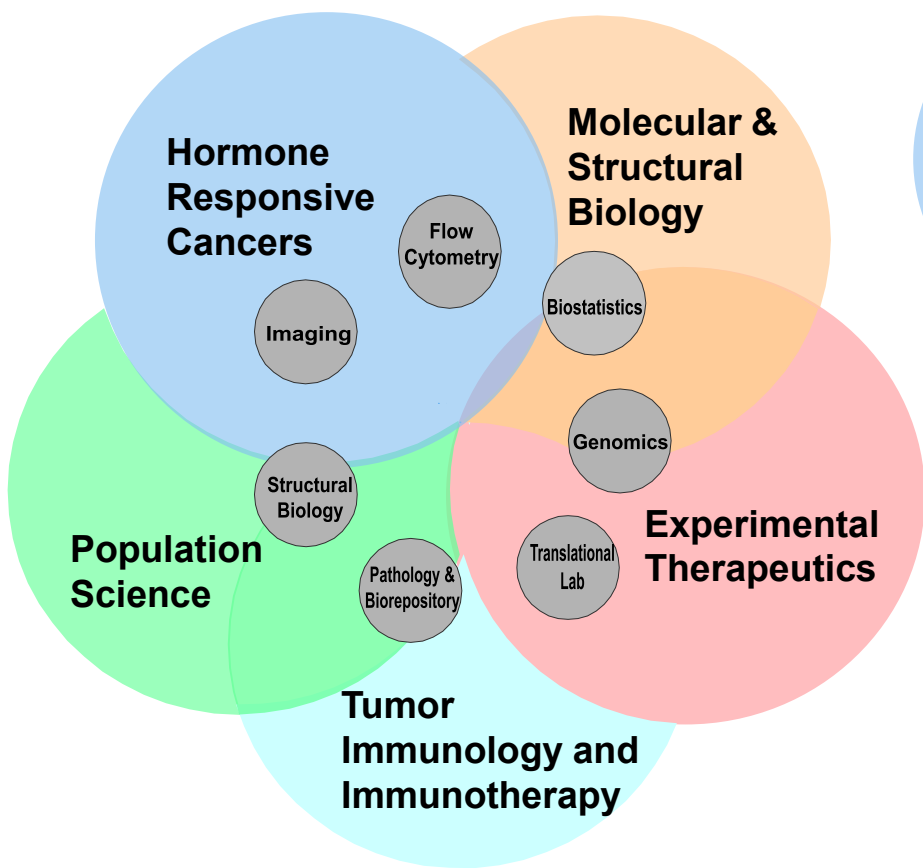
**University of Maryland Marlene and Stewart  
Greenebaum Comprehensive Cancer Center  
Director's Overview  
June 2018**

# UMGCCC at a Glance (2018)

- 3,650+ New Cancer patients/year
- 49,000+ Outpatient Visits, 1,300+ inpatient admissions
- 5 Research Programs, 7 core laboratories
- 262 members (125 Full, 137 Assoc.) representing:
  - 4/11 USM Universities
  - 4/6 UMB Schools
  - 14/25 UMSOM Departments
- NCI Total Funding as of 2017: \$17.2M
- **Total Cancer Research Funding as of 2017: \$90,667,221**
- 231 Clinical Trials; 2,578 pts accrued

# Programs and Shared Services

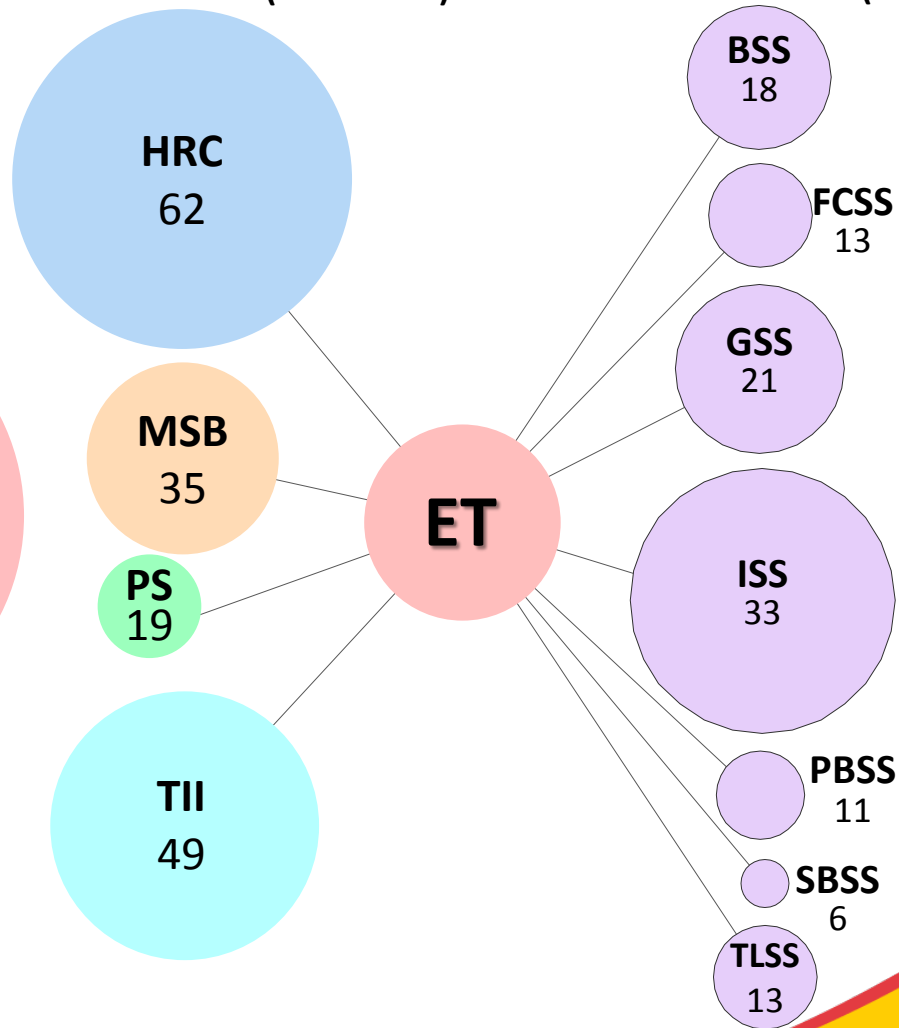
2015



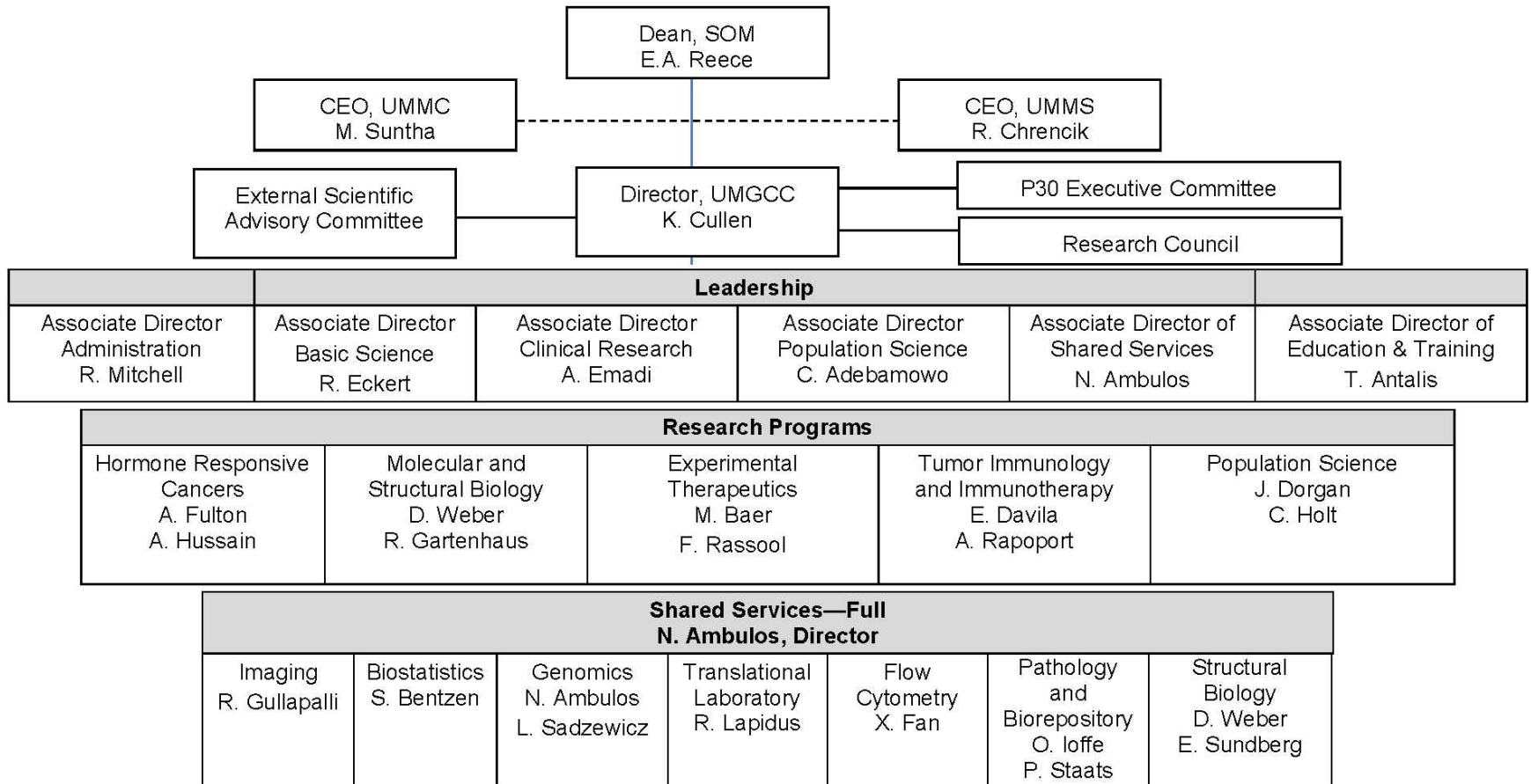
## Demonstration of Interaction and Usage

Co-Authored **Publications** (2010-2014)

Shared Service **Users** (2014)



# Organization of the UMGCC



# University Research Careers

## Types of universities

- **Comprehensive university**
- **Research university and you are outside the medical school**
- **Research university and you are inside the medical school**

# University Research Careers

**Types of universities:**

**Fundamentally a difference in  
balance between missions:**

- **research**
- **education**
- **clinical care**

# University Research Careers

## Types of universities

- **Comprehensive university**
- **Research university and you are outside the medical school**
- **Research university and you are inside the medical school**

# University Research Careers

## **UM, Baltimore: 7 schools**

- **Research university and you are inside the medical school**

## **UM, College Park: 13 schools**

- **Research university and you are outside the medical school**



# University Research Careers

**Your value to the university and your department is judged by peers based upon--**

- **funded research programs**
- **importance of your papers**
- **you as a scientific thought leader**
- **your national reputation**

# University Research Careers

**Your value is recognized by-**

- **Promotion**
- **Awarding of tenure**
- **Increasing scientific and university leadership roles**

# University Research Careers

## The recruitment process

**What the department is looking for.**

# University Research Careers

## The recruitment process:

### What you should look for?

- Department track record
- Recruitment package
- Type of academic position

# University Research Careers

## Priorities:

Now that you are a faculty member early in your career-

- what you should do more of.

# University Research Careers

## Priorities:

- what you should do less of.

# **University Research Careers**

## **Questions**