



# Partnerships to Advance Cancer Health Equity (PACHE) Program Meeting

*Applying to New Funding Opportunities*

H. Nelson Aguila, D.V.M., CRCHD, NCI  
September 8, 2023

| CENTER TO REDUCE  
| CANCER HEALTH DISPARITIES

# Moving Forward

## Applying to New Funding



# Funding Opportunities

NCI YES Program	<u>RFA-CA-21-020 (R25)</u>	September 25, 2023
Career Development Awards	<u>PAR-21-295 (K01)</u> , <u>PAR-21-300 (K08)</u> , <u>PAR-21-301 (K22)</u> ( <b>Clinical Trial Not Allowed</b> ) and <u>PAR-21-296 (K01)</u> , <u>PAR-21-299 (K08)</u> , <u>PAR-21-302 (K22)</u> ( <b>Clinical Trial Required</b> )	NIH Standard Due Dates
Exploratory Grant Award to Promote Workforce Diversity in Basic Cancer Research (R21 Clinical Trial Not Allowed)	<u>PAR-21-061 (R21)</u>	November 17, 2023
Basic Research in Cancer Health Disparities.	<u>PAR-21-322 (R01)</u> , <u>PAR-21-323 (R21)</u> , and <u>PAR-21-324 (R03)</u> . Clinical Trial Not Allowed.	NIH Standard Due Dates
Early Investigator Advancement Program (EIAP)	Online Application	October 2 to November 1
Intramural Continuing Umbrella of Research Experience (iCURE)	Online Application	October 11 to December 06 (pre-application webinar Oct 24)
NOSI: Administrative Supplements to Participate in the NCI Early-Stage Surgeon Scientist Program (ESSP)	<u>NOT-CA-21-100</u>	December 8, 2023

# Funding Opportunities

Title	Mechanism	Submission due dates
NCI Cancer Moonshot Scholars Diversity Program (CMSDP) (R01 Clinical Trial Optional)	<a href="#">RFA-CA-22-050</a> (R01)	<b>February 6, 2024</b>
NOSI: Administrative Supplements to Enhance Institutional Data Science Capacity	NOT-OD-23-123	<b>April 1, 2024</b>
NOSI: Administrative Supplements to Support "All of Us" and Health Disparities-Related Pilot Research Projects at NCI CRCHD-Funded PACHE Partnerships	Notice Of Special Interest – Limited competition	Expired
Transformative Educational Advancement and Mentoring Network (TEAM)	<a href="#">RFA-CA-23-013</a> (R25)	Expired
Multilevel Approach to Connecting Underrepresented Populations to Clinical Trials (CUSP2CT).	<a href="#">RFA-CA-21-057</a> (U01) and <a href="#">RFA-CA-21-058</a> (U24). Clinical Trial Not Allowed	Expired

**Overall PACHE participation in all the opportunities ranged from 2.3 to 40%**

# Participation of PACHE Partnerships in Select Funding Opportunities and Initiatives

EIAP applicants	ESSP applicants	CMSDP applications	Data Science applications	<i>All of Us</i> applications	TEAM applications	CUSP2CT applications
5.5%	2.7%	2.3%	21% (Limited to PACHE)	Limited to PACHE	40%	36%

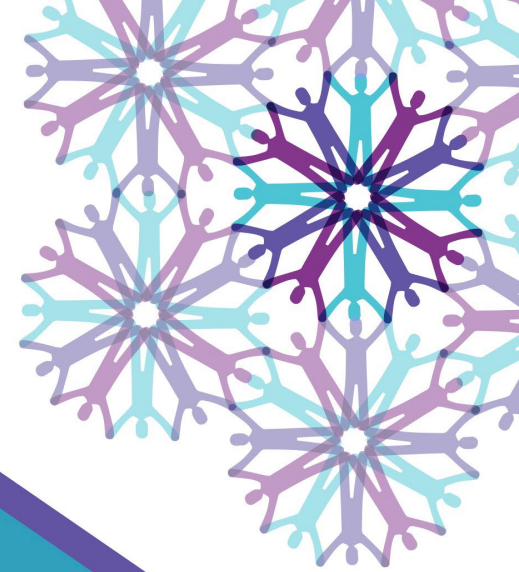
# Moving Forward

## Obtaining new funding



# Questions for Consideration and Discussion

- **Are you aware of the opportunities?**
- **How do you approach the publication of new opportunities within your partnership?**
- **What are the challenges to developing applications?**
- **How can we work together to foster more engagement from partnership investigators?**
- **How can we better assist?**



**NATIONAL  
CANCER  
INSTITUTE**

[cancer.gov/crchd](https://cancer.gov/crchd)